



Tech-Quality Co.,Ltd



Made In Thailand



BRAVO

By Tech-Quality Co.,Ltd

MT50 Pro Series Universal Testing Machine

The Stealth MT50 Pro Series desktop Universal Testing Machine are designed to test a wide spectrum of materials including metal wire & foil, plastics, rubber, textiles, paper, yarn, packaging, adhesives, ceramics, timber, foods, composites & finished components in tension, compression, flexural or shear. Maximum frame capacities are 50KN in compliance with various international standards, such as ASTM, BS EN, JIS, ISO, IEC, TISI, DIN.



Features

1. Panasonic servo motor drive set
2. UK and USA or JAPAN Brand Load cell grade 0.05%
3. 10 Point calibration adjustment
4. High Accuracy Ball Screw
5. Load Resolution 1/500000
6. Force measurement range 0.1% to 100%FS
7. Data sampling rate 1,000 Hz
8. Automatically sample Height measurement
9. Modern extruded profile High-quality load-frame design
10. Load Measuring System EN ISO 7500-1 Class 0.5, ASTM E4
11. Dual-X Axis Graph and multi Graph Display
12. 32-bit A/D converter/ EEPROM Plug
13. Standard Library Test Method
14. Calibration LAB ISO:17025
15. Position control resolution 10nm
16. Position measurement accuracy $\pm 50\mu\text{m}$ or 0.1% of indicate value when position more than 20 mm

Simple to use Test Setup

Limit Testing Break Testing Loop Testing Preload Setup Elongation Auto Return, Over Load Protection

Multi-control mode

- Constant speed
- Position
- Load Rate
- Constant Stress & Strain
- Multi-step control
- USB Interface

Test Types

Tensile Testing
Compressive Testing
Flexural Testing / Friction
Shear / Peeling Insertion / Extraction
Creep/Relaxation
Cyclic test

Applications

Metal, Plastic, Rubber, Textile, Synthetic, Wire, Cable, Food, Packaging, Autopart, Spring, AeroSpace, Woods, Composit, Aluminium etc.

Specifications: Bench-top frame to apply loads - from 50 KN capacity

Model : Stealth	MT50 Pro
Capacity (KN)	50
Load measurement Accuracy +/-0.5% Indicated test force	0.5
Min. Load Resolution	1/10 ⁹
Crosshead Speed (mm/min)	0.0001 - 500
Crosshead Speed Accuracy +/-0.1% of reading	0.1
Extension Resolution (μm per encoder count)	0.0003
Crosshead Travel (mm)	1,000
Crosshead Travel Extended (mm)	1,308
Frame rigidity	95 kN/mm
Weight Approx (kg)	290
Load measurement system : EN ISO 7500-1:2015, Class 0.5 ASTM E4	
Plug 'n' Play, automatic identification of BRAVO series load cells	
The Windows® 11 compatible Black Hole Software with USB Interface	
Single phase 200-230VAC 50Hz	
Operating Temperature 5° to 35°C & Humidity 20% to 80% Non-condensing	
Warranty 1 Year	



Excel , PDF
User design reports

Multi Display & Decimal Point

Displays ToolBox

	Variable	Unit	Decimal
Display 1	Force	N	2
Display 2	Max Load	N	3
Display 3	Stress @ Elong	MPa	3
Display 4	Elong @ Break	%	3
Display 5	Strength	MPa	3

Multi-stage testing with Bravo software

Program Toolbox 1.0.0.4

New Open Save Delete Add Update Verify Remove Templates:

Directions: Compress Speed:Unit 99mm/min Break Type Load Shift <= Target 1:kgf

	Step	Direct	Control Break Type	Speed:mm/min	Target:Unit
▶	1	Tensile	PreLoad	1000mm/min	1:N
	2	Tensile	Load	50mm/min	15:N
	3	Tensile	Stroke	300mm/min	29:mm
	4	Tensile	Stress	20mm/min	10:kgf/mm2
	5	Compress	Load	99mm/min	1:kgf

Sample Information

Shape 3 Point Bending

Sample Name AT4/2 Number M

Unit mm OK Cancel

Parameter(mm)

Width 10.000 Thickness 10.000 ID 0.0 OD 0.0

Gauge Length 50.000 Diameter 0.0 Span length 50.000

Peel Set StartPoint 4.00 EndPoint 25.00 Temperature 25

Area: 100.000 mm

Auto Selete Tab Number: Sampling points 100

Picture

Statistic Reports

New Save Save As Report Column Statics Images HeaderAdd Remove

Template Name Maximum Company Name

Header

Address	2/13 Sukapiban 2 Rd.,Pravet , Bangkok 10250 Thailand.
Tel :	+662 3286878 (Auto)
Website :	www.tech-quality.com
ID LINE :	@techquality

Quality Co.,Ltd

Picture

Auto test setup & load protect

☒ Auto Zero before Test

☒ Auto Save after Test Complete

☒ Auto Return to home after Test

☐ Auto Return to Limit after Test

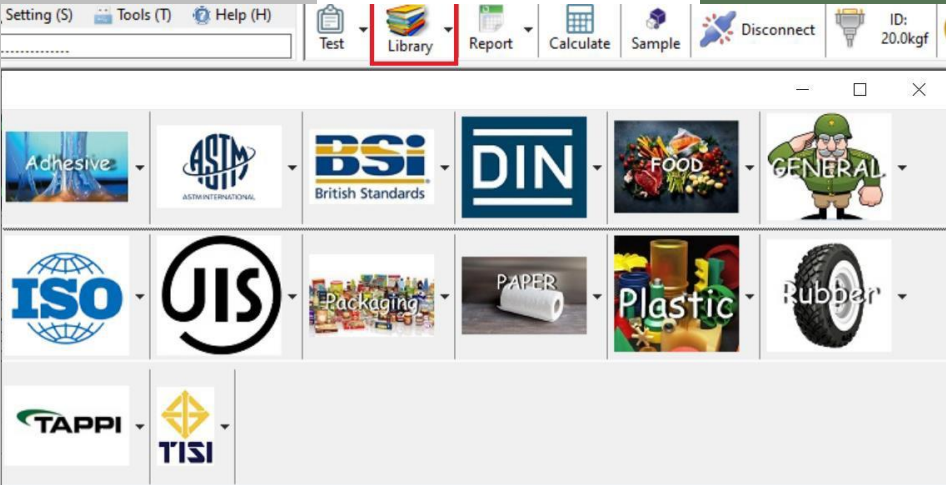
Setting

Return Speed : 900.0 mm/min Load Protect : 80 % 16.00 kgf

Sensor

☐ Stroke ☐ Rub Extensometer ☐ Extensometer

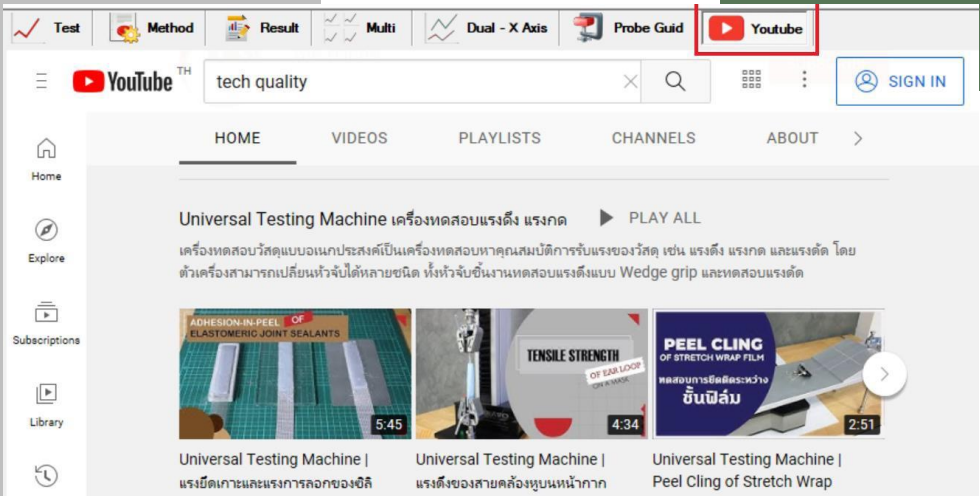
Library



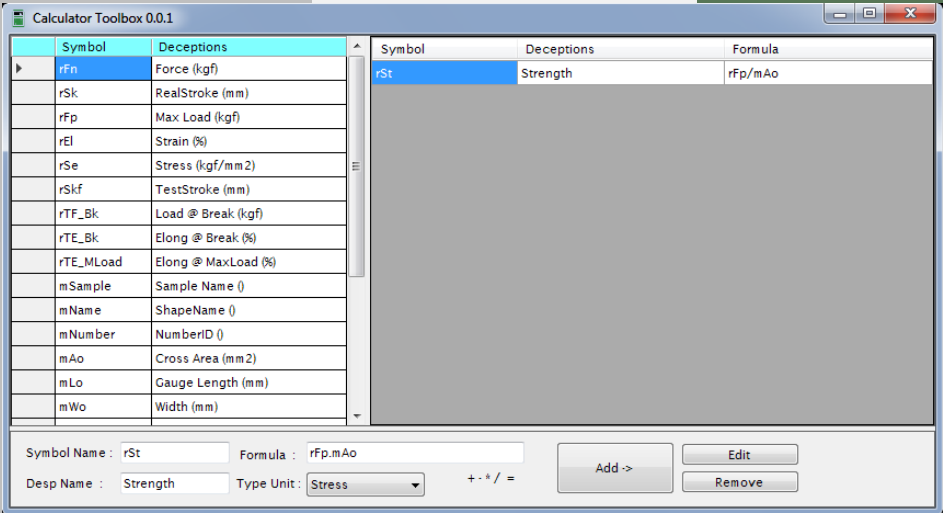
Probe Guide



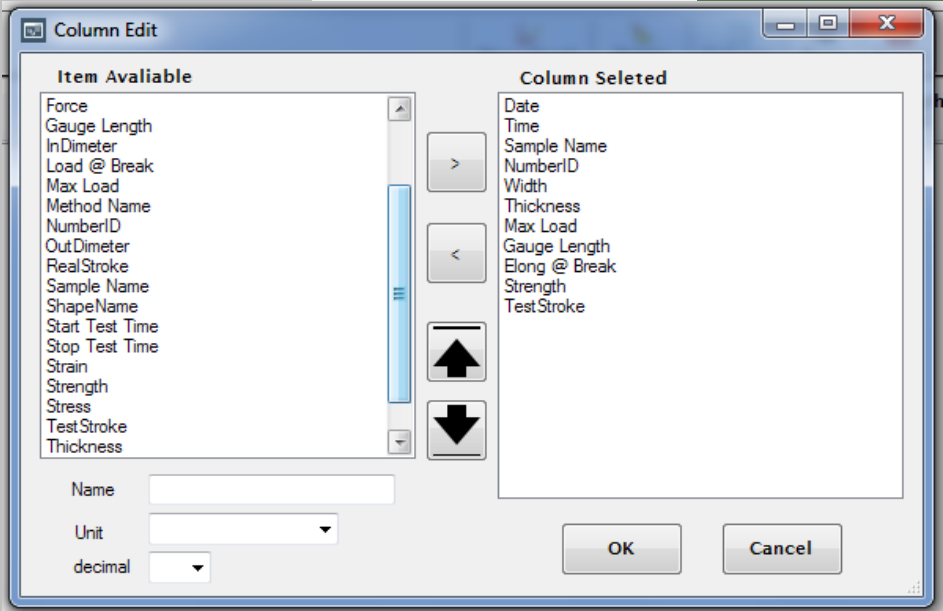
YouTube Guide



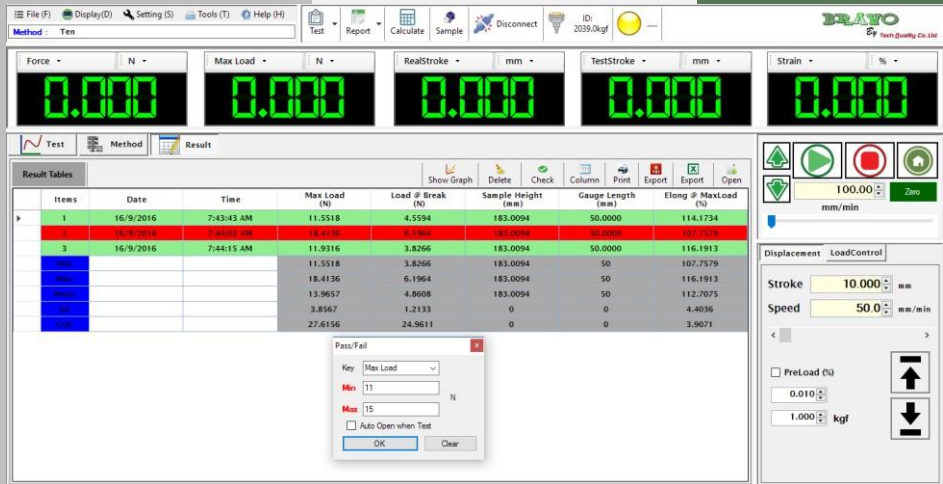
Formula Design By User



Selectable Result



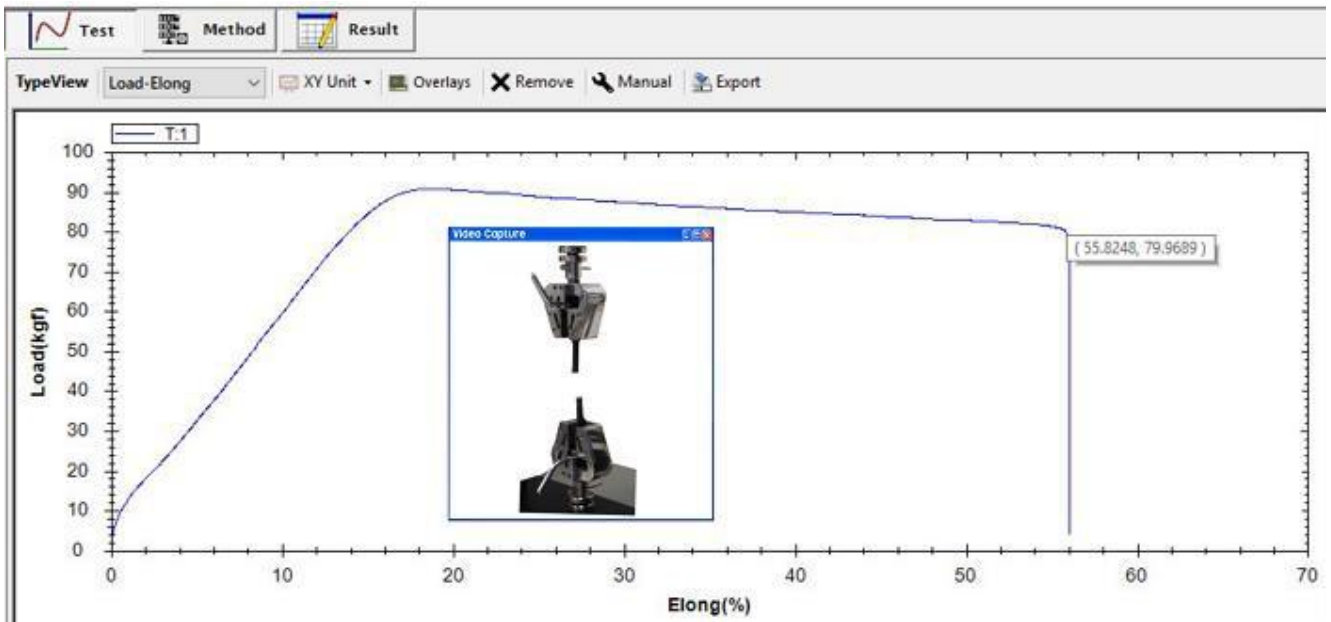
Results can Be color Coded for Immediate Pass/fail recognition





Modern Aluminum extruded profile High-quality load-frame design



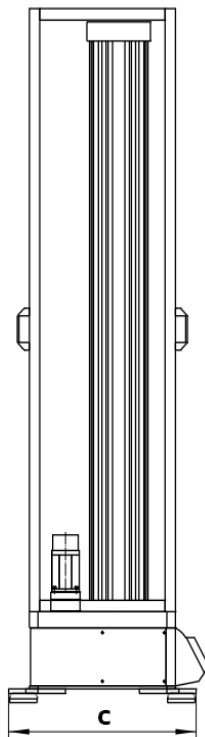
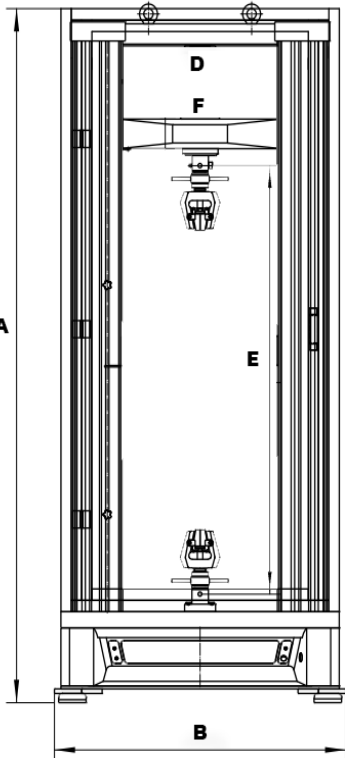


Video and still capture

Video Capture and Synchronisation System enables UTM users to view 20fps video recordings frame by frame. It's a fantastic tool for teaching physical material test for those new to the field, or to help you gain a frame-by-frame understanding of your product strength.

Dimension

		mm
A	Machine Height	1780
B	Machine Width	850
C	Machine Depth	550
D	Between Columns	450
E	Crosshead Travel	1000



Ordering Information



Tech-Quality Co.,Ltd



2/13 Sukapiban 2 Rd., Pravet,
Pravet Bangkok 10250 Thailand



Tel : +662 328 6878



Fax : +662 328 6818



www.tech-quality.com



Email : info@tech-quality.com