



Tech-Quality Co.,Ltd

 Made In Thailand



BRAVO By
Tech-Quality Co.,Ltd

MT Pro Series Universal Testing Machine

The Stealth MT Pro Series desktop Universal Testing Machine are designed to test a wide spectrum of materials including metal wire & foil, plastics, rubber, textiles, paper, yarn, adhesives, ceramics, timber, foods, composites & finished components in tension, compression, flexural or shear . Maximum frame capacities are from 20N to 100KN In compliance with various international standards, such as ASTM, BS EN, JIS, ISO, IEC, TISI



Features

1. Panasonic servo motor drive set
2. USA Brand Load cell grade 0.5%
3. 10 Point calibration adjustment
4. High Accuracy Ball Screw
5. Load Resolution 1/500000
6. Force measurement range 0.1% to 100%FS
7. Data Transfer Rate to PC 1 kHz..
8. Automatically sample Height measurement
9. Modern extruded profile High-quality load-frame design
10. Load Measuring System EN ISO 7500:2015 Class 0.5
11. Wireless Communication
12. Dual-X Axis Graph and multi Graph Display
13. 32-bit A/D converter/ EEPROM Plug
14. Standard Library Test Method

Simple to use Test Setup

Limit Testing Break Testing Loop Testing Preload Setup Elongation Auto Return, Over Load Protection

Multi-control mode

- Constant speed
- Position
- Load Rate
- Constant Stress & Strain
- Multi-step control

Test Types

- Tensile Testing
- Compression Testing
- Flexural Testing / Friction
- Tearing / Peeling
- Insertion / Extraction
- Creep/Relaxation

Applications

Metal, Plastic, Rubber, Textile, Synthetic, Wire, Cable, Food, Packaging, Autopart, Spring, AeroSpace, Woods, Composit etc.

Specifications : Bench-top frame to apply loads - from 5 KN to 100 KN capacity

Model : Stealth	MT100 Pro
Capacity (KN)	100
Load Accuracy (%) FS	0.5
Min. Load Resolution	1/10 ⁹
Crosshead Speed (mm/min)	0.001 - 500
Speed Accuracy (%) FS	0.1
Extension Resolution (µm per encoder count)	0.0003
Crosshead Travel (mm)	1,050
Crosshead Travel Extended (mm)	Call
Width Between Columns (mm) can be offered upon request	550
Weight Approx (kg)	380

Load Measuring System : EN ISO 7500-1:2015, Class 0.5 ASTM E4

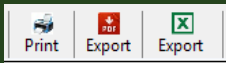
Plug 'n' Play, automatic identification of BRAVO series load cells

The Windows® 10 (64 Bit) compatible Black Hole Software

Power 220Vac/ 50Hz

Operating Temperature 5° to 35°C (41° to 95°F)

Warranty 1 Year

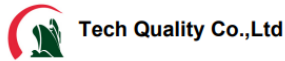


Excel, PDF
User design reports

Multi Display & Decimal Point

Displays ToolBox

	Variable	Unit	Decimal
Display 1	Force	N	2
Display 2	Max Load	N	3
Display 3	Stress @ Elong	MPa	3
Display 4	Elong @ Break	%	3
Display 5	Strength	MPa	3



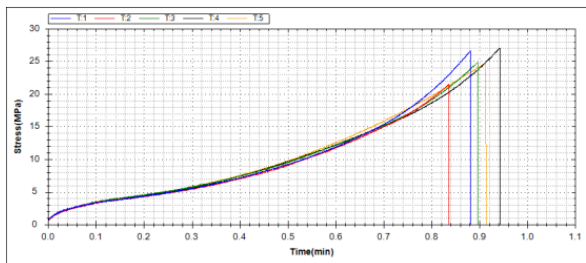
Address : 2/13 Sukapiban 2 Rd., Pravet , Bangkok 10250 Thailand.

Tel : +662 3286878 (Auto)

Website : www.tech-quality.com

ID LINE : @techquality

No	Date	Time	Sample Name	Max Load (N)	Strength (MPa)	Elong @ Break (%)	Stress @ 300% (MPa)
T1	15/11/2564	2:12:39 PM	AT4/2	13.3078	26.6156	636.8040	5.1382
T2	15/11/2564	2:17:27 PM	AT4/2	10.7363	21.4727	648.4660	4.9046
T3	15/11/2564	2:25:10 PM	AT4/2	12.3998	24.7996	616.2240	5.4528
T4	15/11/2564	2:28:01 PM	AT4/2	13.5199	27.0398	651.0140	5.1901
T5	15/11/2564	2:31:34 PM	AT4/2	12.3998	24.7996	620.5360	5.4951
Min				10.7363	21.4727	616.2240	4.9046
Max				13.5199	27.0398	651.0140	5.4528
Mean				12.4727	24.9455	634.6088	5.2002
SD				1.0977	2.1953	15.8273	0.2275
COV				8.8008	8.8006	2.4940	4.3750



Sample Information

Shape: 3 Point Bending

Sample Name: AT4/2, Number: M

Unit: mm

Parameter (mm): Width: 10.000, Thickness: 10.000, ID: 0.0, OD: 0.0

Gauge Length: 50.000, Diameter: 0.0, Span length: 50.000

Peel Set: StartPoint: 4.00, EndPoint: 25.00, Temperature: 25

Area: 100.000 mm

Auto Selete Tab Number:

Sampling points: 100

Statistic Reports

Report generation interface showing a table with columns for Header, Address, Tel, Website, and ID LINE, and a picture field with the Tech Quality Co., Ltd logo.

Multi-stage testing with Bravo software

Program Toolbox 1.0.0.4

Directions: Compress, Speed: 99mm/min, Break Type: Load, Shift: <=, Target: 1.kgf

Step	Direct	Control Break Type	Speed:mm/min	Target:Unit
1	Tensile	PreLoad	1000mm/min	1:N
2	Tensile	Load	50mm/min	15:N
3	Tensile	Stroke	300mm/min	29mm
4	Tensile	Stress	20mm/min	10.kgf/mm2
5	Compress	Load	99mm/min	1.kgf

Multi Graph Display

Software interface showing multiple graphs (Force, Hardness, etc.) and a digital display showing 0.000.

Auto test setup & load protect

Auto Zero before Test

Auto Save after Test Complete

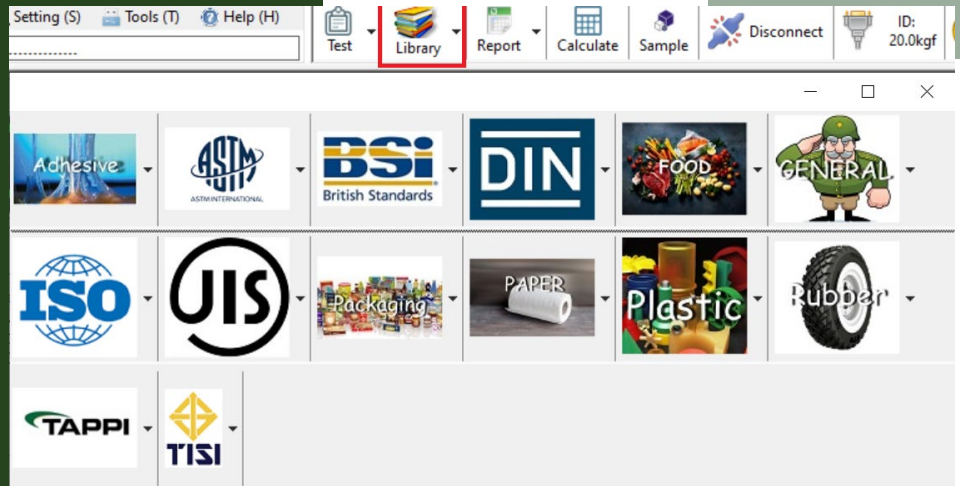
Auto Return to home after Test

Auto Return to Limit after Test

Setting: Return Speed: 900.0 mm/min, Load Protect: 80 % 16.00 kgf

Sensor: Stroke Rub Extensometer Extensometer

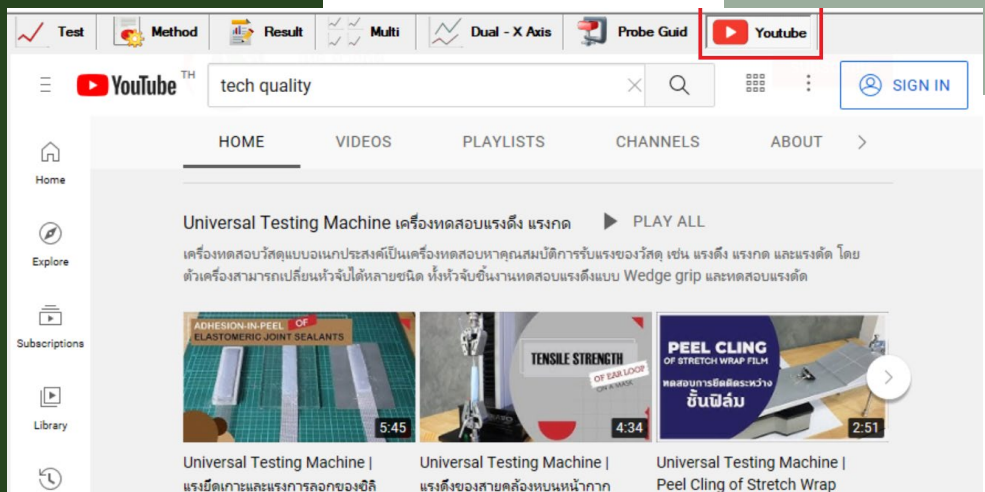
Standard Library



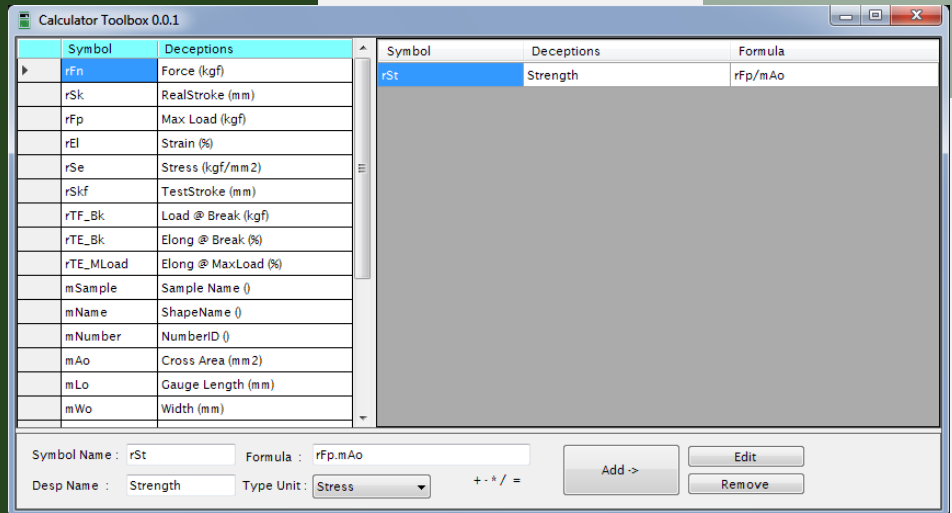
Probe Guide



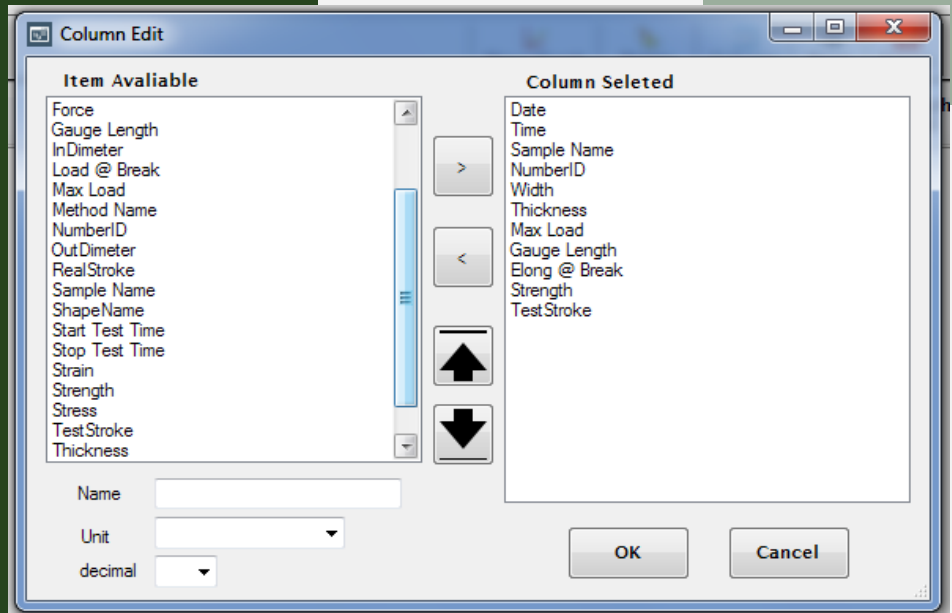
YouTube Guide



Formula Design By User



Selectable Result



Results can Be color Coded for Immediate Pass/fail recognition

